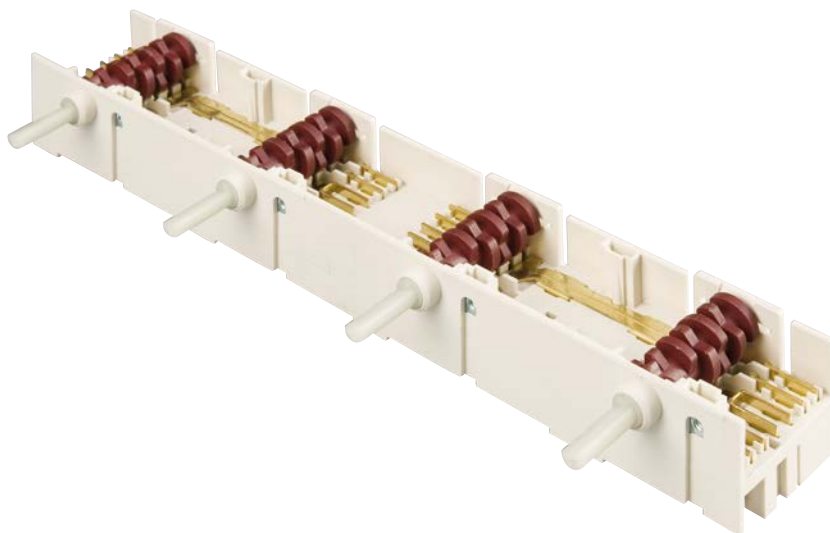


# 5HE 4 BLOCK

<b>TYPICAL APPLICATIONS</b>	Hobs control
<b>WIRING DIAGRAMAS</b>	7 positions
<b>GWFI</b>	850 °C
<b>GWFI</b>	750 °C



This solution integrates all wirings of four 5HE 7TAKT in a single body; robustness, compactness and easy mounting are its best features.



**Rating**  
 12 A / 400 VAC - 30E3  
 T150 °C  
 According to  
 EN61058-1 standard

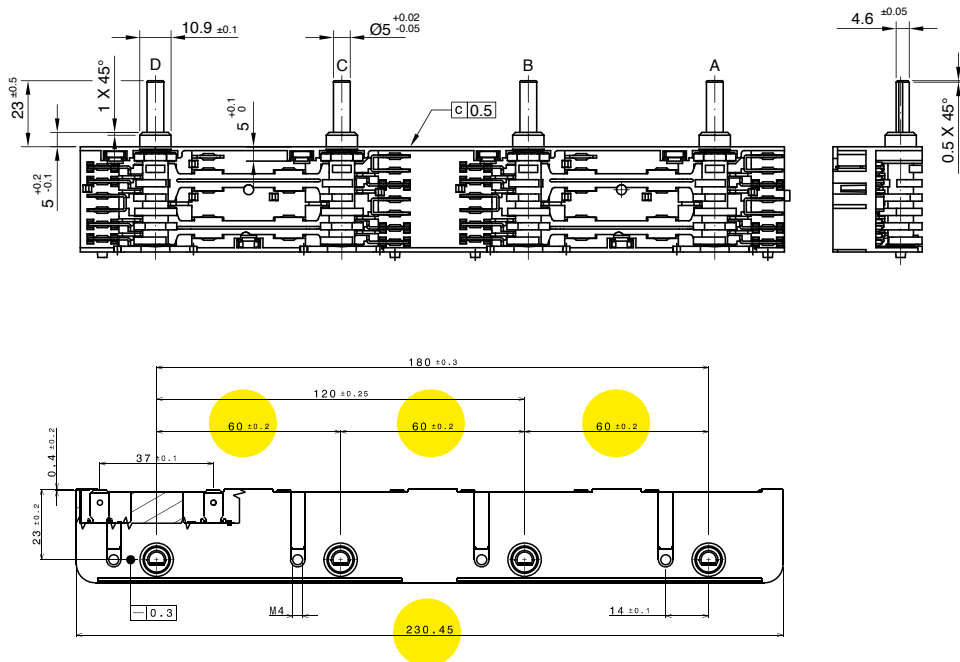
16 A / 250 VAC  
 T120 °C  
 According to  
 UL 1054

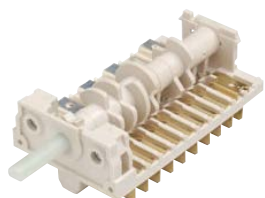
## DIMENSIONS

### 2 versions:

L = 247.35  
 D = 65 ±0.2

L = 230.45  
 D = 60 ±0.2





**CH**

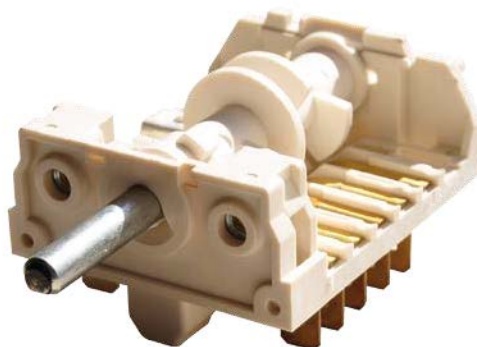
<b>TYPICAL APPLICATIONS</b>	Function selector switch
<b>WIRING DIAGRAMS</b>	2 - 14 positions
<b>CYCLE No.</b>	Up to 30.000
<b>AMBIENT TEMPERATURE</b>	150 °C
<b>GWFI</b>	850 °C
<b>GWFI</b>	750 °C
<b>ADDITIONAL FEATURES</b>	<ul style="list-style-type: none"> <li>■ M4 screw mounting</li> <li>■ 26 contacts version available</li> </ul>



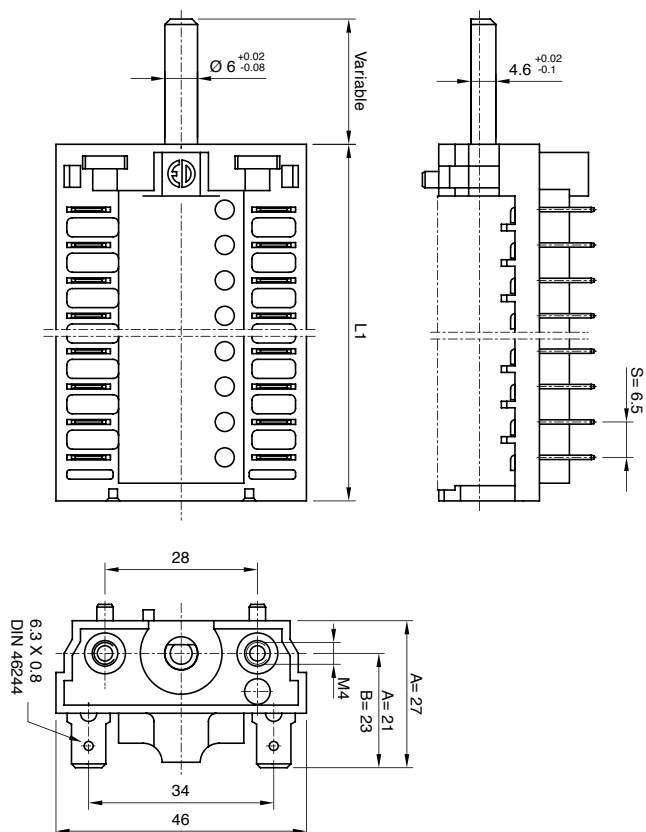
Thermostat version available

16 (6) A / 250 VAC - 30E3  
 16 (8) A / 250-125 VAC - 10E3  
 18 A / 250-125 VAC - 30E3  
 12 A / 400 VAC - 30E3  
 T150 °C  
 According to  
 EN61058-1 standard

3/4 HP / 125 VAC  
 18A / 250 VAC  
 16A / 250 VAC  
 T125 °C  
 According to  
 UL 1054



**DIMENSIONS**



**CONTACT SEQUENCE**

Basic Version					
Type	Contacts		L1		Version
	16(4)/250ac 6(2)/250ac	6(1.5)/250ac	S=7	S=6.5	
1-CH	1		29,5*		A
2-CH	2		25	36*	A
3-CH	3		32	33	A
4-CH	4		39	39.5	A, B
5-CH	5		46	46	A
6-CH	6		49,5		A
6-CH	6		53	52.5	A, B
7-CH	7			59	A, B
8-CH	8		67	65.5	A, B
9-CH	9			72	A
10-CH	10		81	78.5	A, B
11-CH	11		88	85	A, B
12-CH	12		95		A
13-CH	8	5	S=7	S=6	A
			97		