

S X ? ?

SERIES

CUT OUT

?

DRAWING

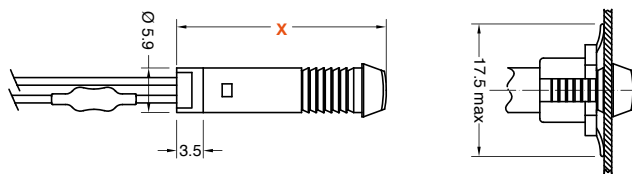
24



○
ø 6 mm
th 0.5 ... 2 mm

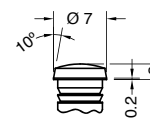
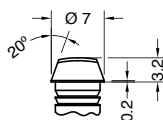


○
ø 6 mm
th 0.5 ... 1 mm

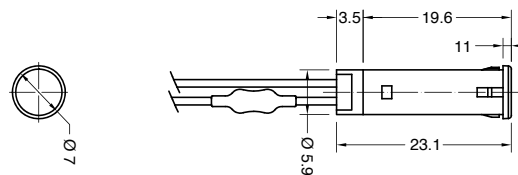


0 X = 24.2 mm

2 X = 23 mm



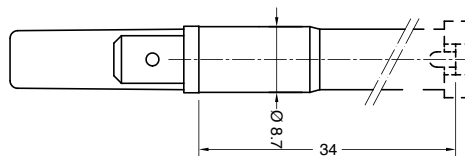
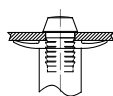
5



27



○
ø 6 mm
th 0.5 ... 3 mm

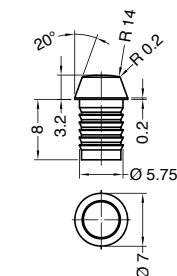
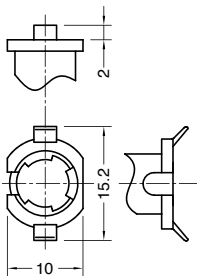


5 No lens 2 clips

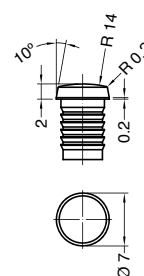
0 Drawing 5 + lens

2 Drawing 5 + lens

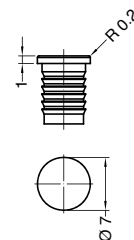
8 Drawing 5 + lens



Lens available also separately SX27T0...



Lens available also separately SX27T2...



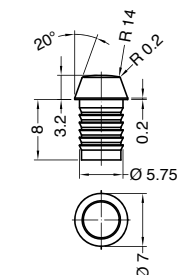
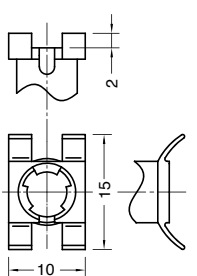
Lens available also separately SX27T8...

N No lens 4 clips

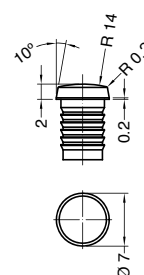
A Drawing N + lens

C Drawing N + lens

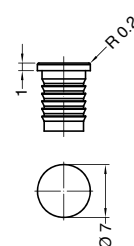
E Drawing N + lens



Lens available also separately SX27T0...



Lens available also separately SX27T2...



Lens available also separately SX27T8...

S	X	SERIES	DRAWING	TERMINAL	FUNCTION	VOLTAGE	TEMP.	COLOUR	WIRES	0	0

?	?	?	?	?	?	?	?	?	?	?	0	0
---	---	---	---	---	---	---	---	---	---	---	---	---

TERMINAL

1 Series 27
Tabs 6.3 x 0.8

C Series 27
Signal Click

K Series 27
Wires crimped

P Series 24
Wires locked with plug

R Series 27
Wires sealed

FUNCTION

1 Series 24 - 27

Neon or Fluorescent lamp

2 Series 27

Neon or Fluorescent lamp with anti-luminescence

3 Series 27

Incandescent lamp

5 Series 24 - 27
Terminal 1 - P

LED
DC or AC current
2 ÷ 24 V

6 Series 24 - 27
Terminal 1 - P

LED
AC current
110 ÷ 250 V

7 Series 27
Terminal C - K - R

LED
AC current
110 ÷ 250 V

VOLTAGE

1 Function 5
2 V

2 Function 3 - 5
12 V

3 Function 3 - 5
24 V

4 Function 1 - 2 - 6 - 7
110 V

5 Function 1 - 2 - 6 - 7
125 V

6 Function 1 - 2 - 6 - 7
230 V

7 Function 1 - 2 - 6 - 7
250 V

8 Function 1 - 2
400 V

VDE or UL certified

?
Available on demand

X
Custom

TEMPERATURE

A
T 75 °C

1 Function 1 - 2 - 3
T 90 °C

2 Function 1 - 2
T 120 °C

3 Function 1 - 2
T 150 °C

COLOUR

SERIES 24
ILLUMINATED ✨

G red

H orange

E green

L white

SERIES 27

Drawing 5 - N

NO LENS ✨

0 red light

1 green light

Drawing 0 - 2 - 8 - A - C - E

ILLUMINATED ✨

G red

H orange

E green

L white

X ?
custom

WIRES

000 Terminal 1 - C
Indicator light without wires

??? Terminal K - P - R
Indicator light with wires

Wires Material:
 ■ PVC (up to T90 °C)
 ■ SILICONE (up to T200 °C)

Wires Length:
 from 60 mm to 600 mm
 (special version available up to 1.450 mm)

Wires Ends:
 ■ pre-stripped (from 5.5 to 18 mm)
 ■ stripped (from 5.5 to 18 mm)
 ■ not stripped
 ■ crimp terminals