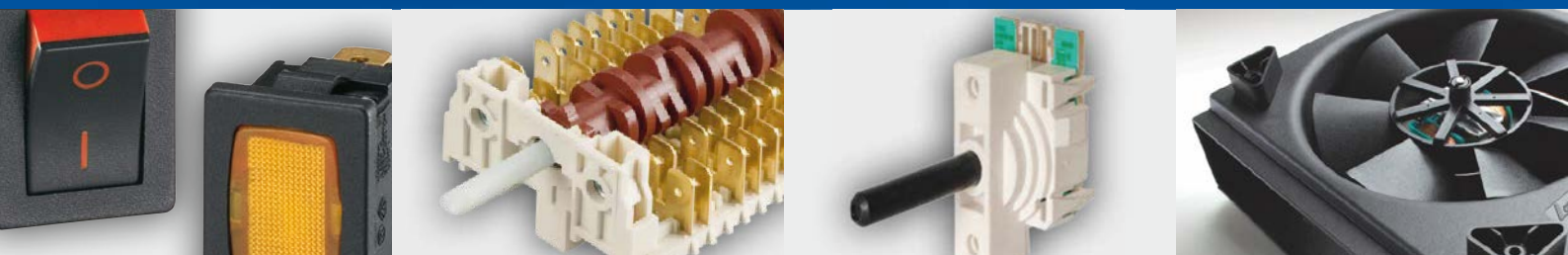


30 **CVEREL**

THE WORLD IN A CLICK



INDICATOR LIGHTS



Dreefs

 **SIGNAL LUX**

givem

M MOLVENO

 **KAUTT & BUX**

Indicator Lights

03



INDICATOR LIGHTS

FUNCTIONS	<ul style="list-style-type: none"> ■ Neon or fluorescent lamp, with or without anti-luminescence resistor ■ Incandescent lamp ■ LED in AC or DC version
VOLTAGE	From 2 VAC to 400 VAC
MAX TEMPERATURE	From 75 °C to 150 °C
GWT	850 °C
GWT NO FLAME (<2sec)	650 °C



SERIES

CUT OUT

17



Custom*



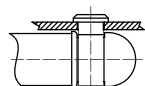
21



Custom



5.4 x 9 mm
th 1.5 mm

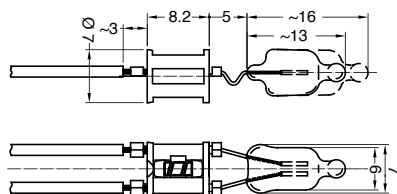


2.5 x 11.6 mm

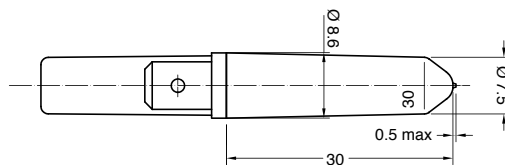
?

DRAWING

1

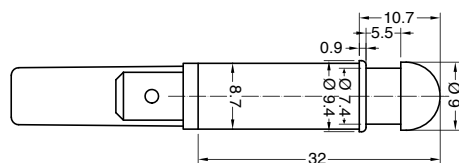


3

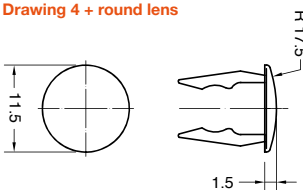


Accessory lenses available separately (pages 172-173)

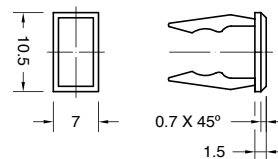
4



P Drawing 4 + round lens



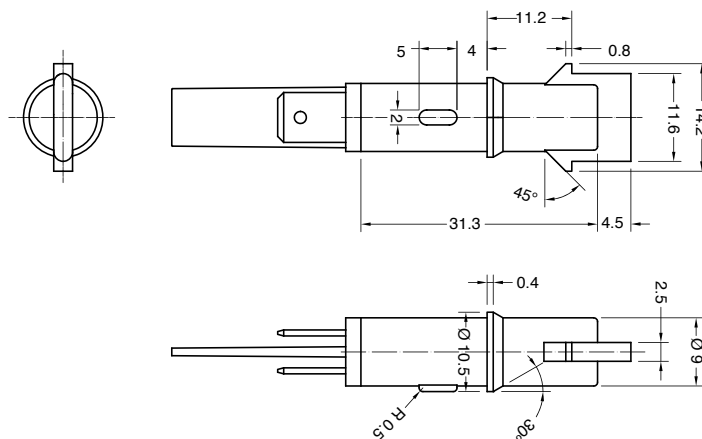
Q Drawing 4 + square lens



Lens available also separately SX21T542...

Lens available also separately SX21T544...

8



S	X	SERIES	DRAWING	TERMINAL	FUNCTION	VOLTAGE	TEMP.	COLOUR	WIRES	0	0

?	?	?	?	?	?	?	?	?	?	0	0
---	---	---	---	---	---	---	---	---	---	---	---

TERMINAL FUNCTION VOLTAGE TEMPERATURE COLOUR WIRES

1 Series 21
Tabs 6.3 x 0.8

A Series 17
Wires

C Series 21
Signal Click

K Series 21
Wires crimped

R Series 21
Wires sealed

1 Series 17 - 21

Neon or Fluorescent lamp

2 Series 21

Neon or Fluorescent lamp with anti-luminescence

3 Series 21

Incandescent lamp

5 Series 21

LED
DC or AC current
2 ÷ 24 V

6 Series 21
Terminal 1

LED
AC current
110 ÷ 250 V

7 Series 21
Terminal C - K - R

LED
AC current
110 ÷ 250 V

1 Function 5
2 V

2 Function 3 - 5
12 V

3 Function 3 - 5
24 V

4 Function 1 - 2 - 6 - 7
110 V

5 Function 1 - 2 - 6 - 7
125 V

6 Function 1 - 2 - 6 - 7
230 V

7 Function 1 - 2 - 6 - 7
250 V

8 Function 1 - 2
400 V

VDE or UL certified

?
Available on demand

* UL certification not available

X
Custom

A
T 75 °C

1 Function 1-2-3
T 90 °C

2 Function 1 - 2
T 120 °C

3 Function 1 - 2
T 150 °C

SERIES 17
NO LENS ☀

0 red light

1 green light

SERIES 21

ILLUMINATED ☀

Drawing 3 - 4

L white

Drawing P - Q - 8

G red

H orange

E green

L white

X **?**
custom

000 Terminal 1 - 7 - C
Indicator light without wires

??? Terminal A - K - R
Indicator light with wires

Wires Materials:

- PVC (up to T90 °C)
- SILICONE (up to T200 °C)

Wires Lengths:
from 60 mm to 600 mm (special version available up to 1.450 mm)

Wires Ends:

- pre-stripped (from 5.5 to 18 mm)
- stripped (from 5.5 to 18 mm)
- not stripped
- crimp terminals

S X ? ?

SERIES

CUT OUT

?

DRAWING

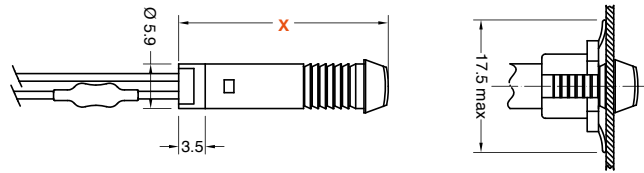
24



○
ø 6 mm
th 0.5 ... 2 mm

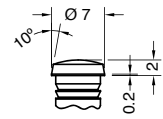
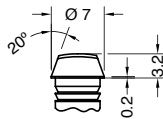


○
ø 6 mm
th 0.5 ... 1 mm

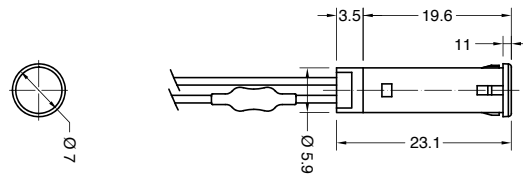


0 X = 24.2 mm

2 X = 23 mm



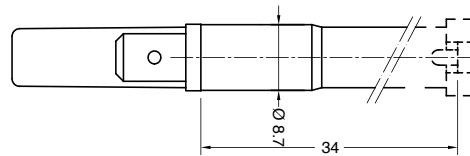
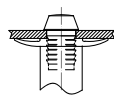
5



27



○
ø 6 mm
th 0.5 ... 3 mm

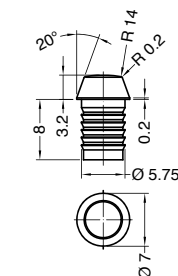
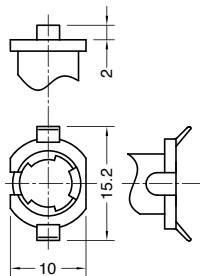


5 No lens 2 clips

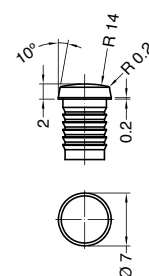
0 Drawing 5 + lens

2 Drawing 5 + lens

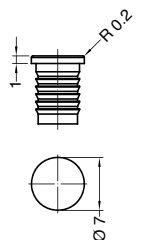
8 Drawing 5 + lens



Lens available also separately SX27T0...



Lens available also separately SX27T2...



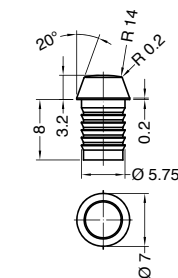
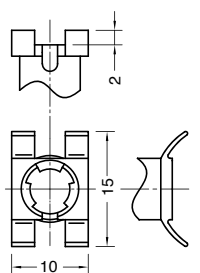
Lens available also separately SX27T8...

N No lens 4 clips

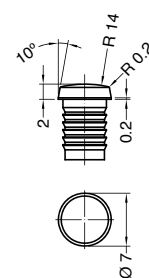
A Drawing N + lens

C Drawing N + lens

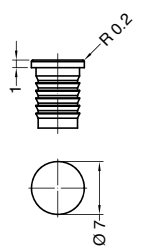
E Drawing N + lens



Lens available also separately SX27T0...



Lens available also separately SX27T2...



Lens available also separately SX27T8...

Further lens shapes available on demand

S	X	SERIES	DRAWING	TERMINAL	FUNCTION	VOLTAGE	TEMP.	COLOUR	WIRES	0	0

?	?	?	?	?	?	?	?	?	?	?	?	0	0
---	---	---	---	---	---	---	---	---	---	---	---	---	---

TERMINAL	FUNCTION	VOLTAGE	TEMPERATURE	COLOUR	WIRES
----------	----------	---------	-------------	--------	-------

1 Series 27
Tabs 6.3 x 0.8

C Series 27
Signal Click

K Series 27
Wires crimped

P Series 24
Wires locked with plug

R Series 27
Wires sealed

1 Series 24 - 27

Neon or Fluorescent lamp

2 Series 27

Neon or Fluorescent lamp with anti-luminescence

3 Series 27

Incandescent lamp

5 Series 24 - 27
Terminal 1 - P

LED
DC or AC current
2 ÷ 24 V

6 Series 24 - 27
Terminal 1 - P

LED
AC current
110 ÷ 250 V

7 Series 27
Terminal C - K - R

LED
AC current
110 ÷ 250 V

1 Function 5
2 V

2 Function 3 - 5
12 V

3 Function 3 - 5
24 V

4 Function 1 - 2 - 6 - 7
110 V

5 Function 1 - 2 - 6 - 7
125 V

6 Function 1 - 2 - 6 - 7
230 V

7 Function 1 - 2 - 6 - 7
250 V

8 Function 1 - 2
400 V

VDE or UL certified

?
Available on demand

X
Custom

A
T 75 °C

1 Function 1 - 2 - 3
T 90 °C

2 Function 1 - 2
T 120 °C

3 Function 1 - 2
T 150 °C

SERIES 24

ILLUMINATED ✨

G red

H orange

E green

L white

SERIES 27

Drawing 5 - N

NO LENS ✨

0 red light

1 green light

Drawing 0 - 2 - 8 - A - C - E

ILLUMINATED ✨

G red

H orange

E green

L white

X ?
custom

000 Terminal 1 - C
Indicator light without wires

??? Terminal K - P - R
Indicator light with wires

Wires Material:

- PVC (up to T90 °C)
- SILICONE (up to T200 °C)

Wires Length:
from 60 mm to 600 mm (special version available up to 1.450 mm)

Wires Ends:

- pre-stripped (from 5.5 to 18 mm)
- stripped (from 5.5 to 18 mm)
- not stripped
- crimp terminals

S X ? ?

SERIES

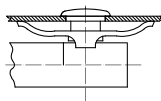
CUT OUT

DRAWING

27



○
ø 8 mm
th 0.5 ... 2 mm



28

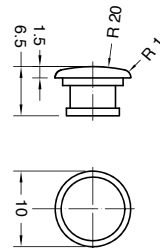
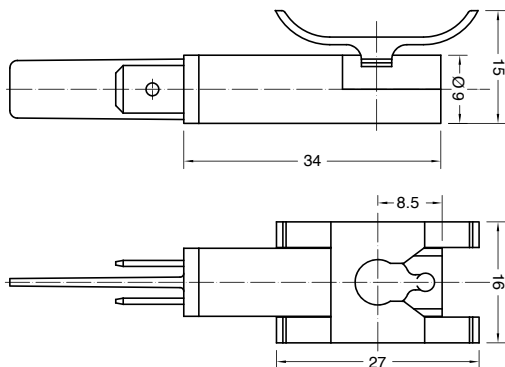


Custom

?

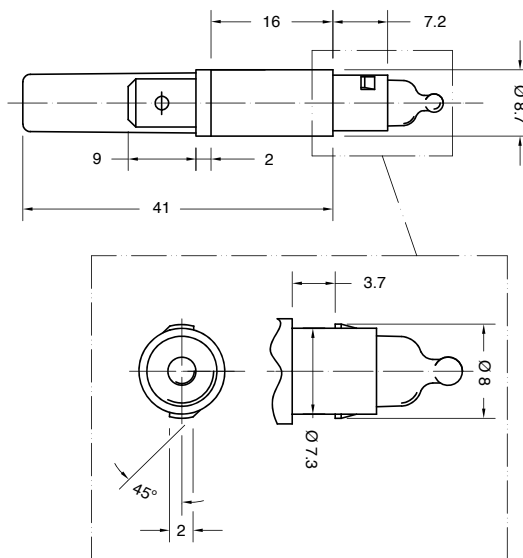
M No lens

P Drawing M + lens



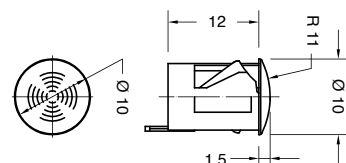
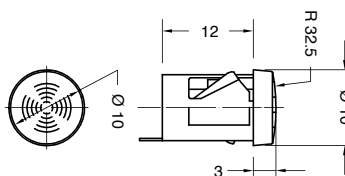
Lens available also separately SX27TP...

9 No lens



6 Drawing 9 + lens

F Drawing 9 + lens

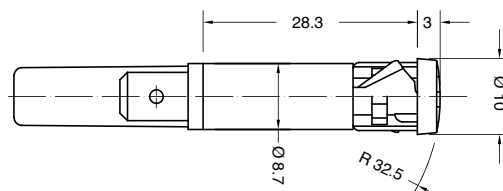


Lens available also separately SX28T6...

Lens available also separately SX28TF...

Further lens shapes available on demand

H One piece



○
ø 9 mm
th 0.8 ... 2 mm



○
ø 9 mm
th 0.8 ... 2 mm

S	X	SERIES	DRAWING	TERMINAL	FUNCTION	VOLTAGE	TEMP.	COLOUR	WIRES	0	0
?	?									0	0

?	?	?	?	?	?	?	?	?	?	0	0
---	---	---	---	---	---	---	---	---	---	---	---

TERMINAL

1 Series 27 - 28
Tabs 6.3 x 0.8

C Series 27 - 28
Signal Click

Socket terminals

K Series 28
Wires crimped

R Series 27 - 28
Wires sealed

FUNCTION

1 Series 27 - 28

Neon or Fluorescent lamp

2 Series 27 - 28

Neon or Fluorescent lamp with anti-luminescence

3 Series 27 - 28

Incandescent lamp

5 Series 27 - 28

LED
DC or AC current
2 ÷ 24 V

6 Series 28
Terminal 1

LED
AC current
110 ÷ 250 V

7 Series 28
Terminal C - K - R

LED
AC current
110 ÷ 250 V

VOLTAGE

1 Function 5
2 V

2 Function 3 - 5
12 V

3 Function 3 - 5
24 V

4 Function 1 - 2 - 6 - 7
110 V

5 Function 1 - 2 - 6 - 7
125 V

6 Function 1 - 2 - 6 - 7
230 V

7 Function 1 - 2 - 6 - 7
250 V

8 Function 1 - 2
400 V

VDE or UL certified

?
Available on demand

X
Custom

TEMPERATURE

A
T 75 °C

1 Function 1 - 2 - 3
T 90 °C

2 Function 1 - 2
T 120 °C

3 Function 1 - 2
T 150 °C

COLOUR

NO LENS ☼

0 red light

1 green light

ILLUMINATED ☼

G red

H orange

E green

L white

X **?**
custom

WIRES

000 Terminal 1 - C
Indicator light without wires

??? Terminal K - R
Indicator light with wires

Wires Material:

- PVC (up to T90 °C)
- SILICONE (up to T200 °C)

Wires Length:
from 60 mm to 600 mm (special version available up to 1.450 mm)

Wires Ends:

- pre-stripped (from 5.5 to 18 mm)
- stripped (from 5.5 to 18 mm)
- not stripped
- crimp terminals

S X ? ?

SERIES

CUT OUT

?

DRAWING

31



○
ø 10 mm
th 0.5 ... 9 mm



○
ø 10 mm
th 0.5 ... 9 mm

33



○
ø 10 mm
th 0.8 ... 2 mm

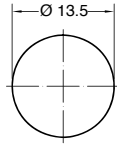


○
ø 10 mm
th 0.8 ... 2 mm

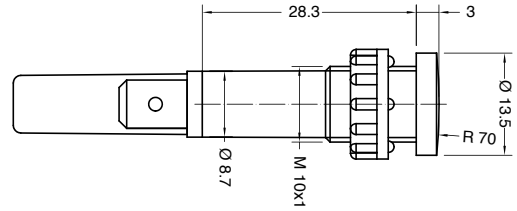


○
ø 10 mm
th 0.8 ... 2 mm

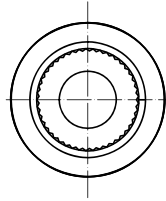
2 Mounted ring



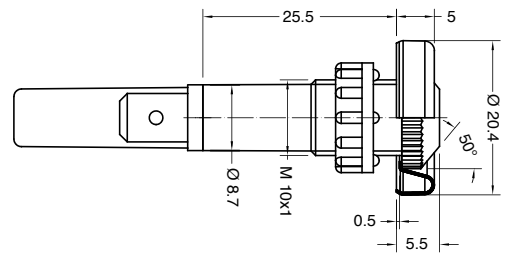
B Unmounted ring



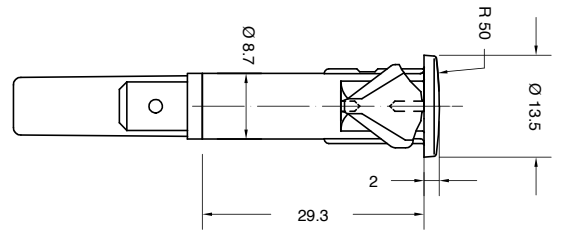
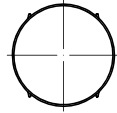
9 Mounted ring



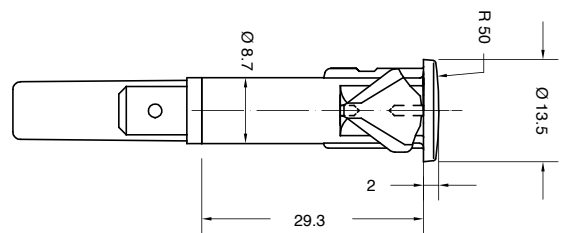
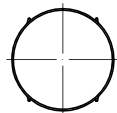
D Unmounted ring



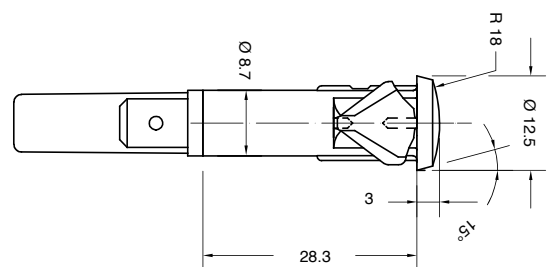
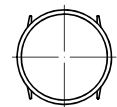
2



C With antirotation rib



H



S	X	SERIES	DRAWING	TERMINAL	FUNCTION	VOLTAGE	TEMP.	COLOUR	WIRES	0	0

?	?	?	?	?	?	?	?	?	?	0	0
---	---	---	---	---	---	---	---	---	---	---	---

TERMINAL	FUNCTION	VOLTAGE	TEMPERATURE	COLOUR	WIRES
----------	----------	---------	-------------	--------	-------

1 Tabs 6.3 x 0.8

C Signal Click

Socket terminals

K Wires crimped

R Wires sealed

1

Neon or Fluorescent lamp

2

Neon or Fluorescent lamp with anti-luminescence

3

Incandescent lamp

5

LED
DC or AC current
2 ÷ 24 V

6 Terminal 1

LED
AC current
110 ÷ 250 V

7 Terminal C - K - R

LED
AC current
110 ÷ 250 V

1 Function 5
2 V

2 Function 3 - 5
12 V

3 Function 3 - 5
24 V

4 Function 1 - 2 - 6 - 7
110 V

5 Function 1 - 2 - 6 - 7
125 V

6 Function 1 - 2 - 6 - 7
230 V

7 Function 1 - 2 - 6 - 7
250 V

8 Function 1 - 2
400 V

VDE or UL certified

?
Available on demand

X
Custom

A
T 75 °C

1 Function 1 - 2 - 3
T 90 °C

2 Function 1 - 2
T 120 °C

3 Function 1 - 2
T 150 °C

ILLUMINATED ☀

G red

H orange

E green

L white

X **?** custom

000 Terminal 1 - C
Indicator light without wires

??? Terminal K - R
Indicator light with wires

Wires Material:

- PVC (up to T90 °C)
- SILICONE (up to T200 °C)

Wires Length:
from 60 mm to 600 mm (special version available up to 1.450 mm)

Wires Ends:

- pre-stripped (from 5.5 to 18 mm)
- stripped (from 5.5 to 18 mm)
- not stripped
- crimp terminals

S X ? ?

SERIES

CUT OUT

?

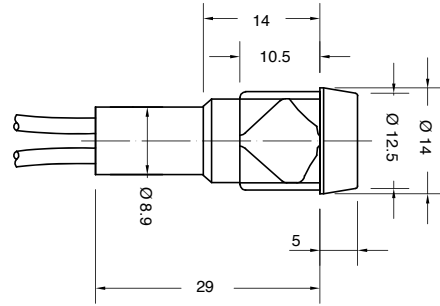
DRAWING

41



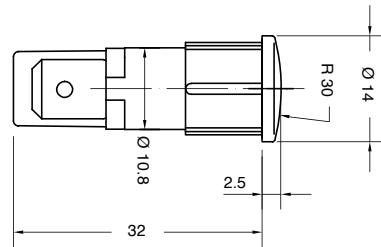
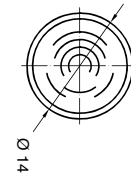
○
ø 12 mm
th 0.8 ... 2 mm

1



○
ø 12 mm
th 0.8 ... 2 mm

2

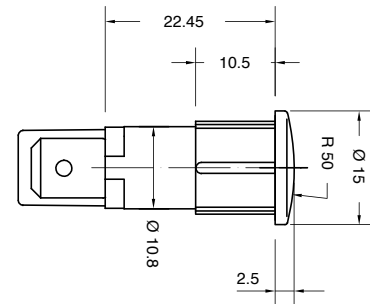
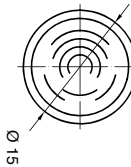


43



○
ø 13 mm
th 0.8 ... 2 mm

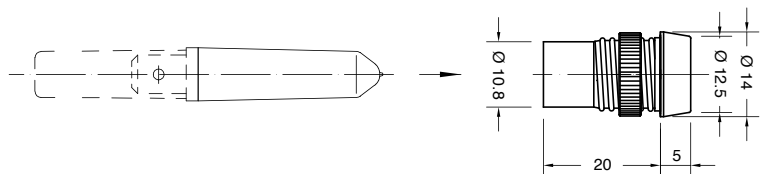
2



ACCESSORY LENSES FOR SERIES SX213...

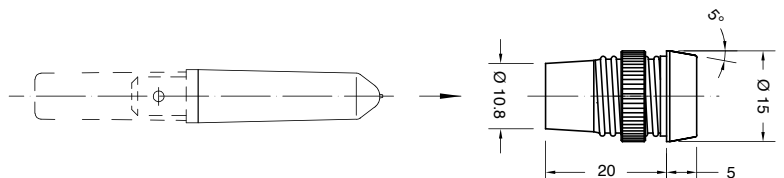
SX21T511...

○
ø 12 mm
th 0.8 ... 6.5 mm

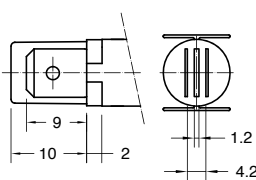
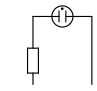
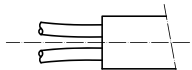
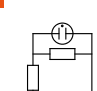
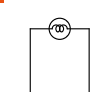
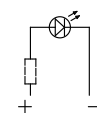
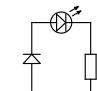
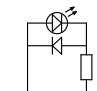


SX21T531...


○
ø 13 mm
th 0.8 ... 6.5 mm



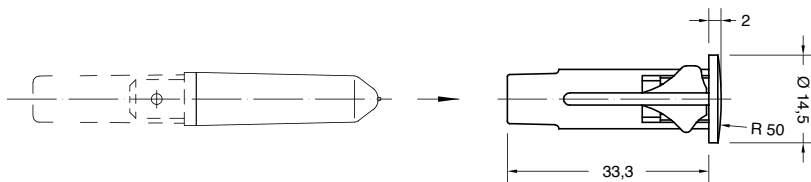
S	X	SERIES	DRAWING	TERMINAL	FUNCTION	VOLTAGE	TEMP.	COLOUR	WIRES	0	0
---	---	--------	---------	----------	----------	---------	-------	--------	-------	---	---

?	?	?	?	?	?	?	?	?	?	?	?	0	0
TERMINAL	FUNCTION	VOLTAGE	TEMPERATURE	COLOUR	WIRES								
<p>1 Series 41 - 43 Tabs 6.3 x 0.8</p> 	<p>1</p> 	<p>1 Function 5 2 V</p> <p>2 Function 3 - 5 12 V</p> <p>3 Function 3 - 5 24 V</p> <p>4 Function 1 - 2 - 6 - 7 110 V</p> <p>5 Function 1 - 2 - 6 - 7 125 V</p> <p>6 Function 1 - 2 - 6 - 7 230 V</p> <p>7 Function 1 - 2 - 6 - 7 250 V</p> <p>8 Function 1 - 2 400 V</p> <p>VDE or UL certified</p> <p>? Available on demand</p> <p>X Custom</p>	<p>A T 75 °C</p> <p>1 Function 1-2-3 T 90 °C</p> <p>2 Function 1 - 2 T 120 °C</p> <p>3 Function 1 - 2 T 150 °C</p>	<p>ILLUMINATED ✨</p> <p>G red</p> <p>H orange</p> <p>E green</p> <p>L white</p> <p>X ? custom</p>	<p>000 Terminal 1 - C Indicator light without wires</p> <p>??? Terminal K - R Indicator light with wires</p> <p>Wires Material:</p> <ul style="list-style-type: none"> PVC (up to T90 °C) SILICONE (up to T200 °C) <p>Wires Length: from 60 mm to 600 mm (special version available up to 1.450 mm)</p> <p>Wires Ends:</p> <ul style="list-style-type: none"> pre-stripped (from 5.5 to 18 mm) stripped (from 5.5 to 18 mm) not stripped crimp terminals 	<p>R Series 41 Wires sealed</p> 	<p>2</p> 	<p>3</p> 	<p>5</p> 	<p>6 Terminal 1</p> 	<p>7 Terminal R</p> 		

SX21T572...
with antirotation rib



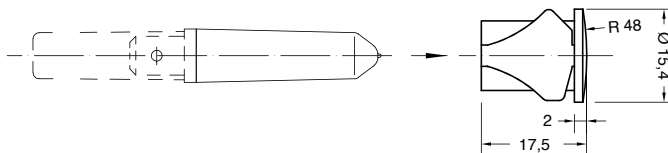
 ø 10.2 mm
 th 0.8 ... 2 mm



SX21T578...
without antirotation rib



 ø 13 mm
 th 0.5 ... 2.5 mm



SX21T592...



- Headquarter
- Production Site
- Sales Network



Everel Group S.P.A.

[Headquarter - Production Site]
Via Cavour, 9
37067 Valeggio sul Mincio (VR) - Italy
tel. +39 045 6313711
fax +39 045 6313730

Dreefs GmbH

[Production Site]
Ernst-Dreefs-Straße 7
96364 Marktrodach - Germany
tel. +49 9261 9610
fax +49 9261 961248

Everel Romania S.r.l.

[Production Site]
Calea Timisorii 109
Lipova - Arad - Romania
tel. +40 257 563087
fax +40 257 563086

www.everelgroup.com

