

Valeggio sul Mincio, 1st March 2023

TO WHOM IT MAY CONCERN

REF.: EVEREL GROUP ENVIRONMENT DECLARATION

This is to declare that the products supplied by Everel Group SpA are in accordance with the European Directives and Regulations that are listed below.

- 1. RoHSIII (2011/65/EU, 2015/863/EU) & China RoHS2 (GB/T 26125-2011, GB/T 26572-2011SJ/T11364-2014, SJ/Z 11388-2009), Reg. (EU) 2017/852** Restriction of the use of certain hazardous substances in electrical and electronic equipment.
Compounds of cadmium, lead, mercury and hexavalent chromium, flame retardants PBB and PBDE including pentabromodiphenyl ether (CAS-No. 32534-81-9) and octabromodiphenyl ether (CAS-No.32536-52-0), Phthalates DEHP, BBP, DBP, DIBP, are not intentionally added in Everel finished products. Their content is below the specific limits for these substances, i.e., 1,000 ppm, as defined in the legislations mentioned above: Lead <1,000 ppm; Mercury <1,000 ppm; Cadmium<100 ppm; Hexavalent Chromium <1,000 ppm; Polybrominated biphenyls (PBB)< 1,000 ppm; Polybrominated diphenyl ether (PBDE) <1000; DEHP <1000 ppm; BBP <1000 ppm; DBP <1000 ppm; DIBP <1000 ppm. Rif. Dir. (EU) 2018/2005.
- 2. REACH Regulation 1907/2006/CE (European Regulation for Registration, Evaluation and Authorization of Chemicals);**
Based on our knowledge and the information received from our suppliers, we declare that products supplied by Everel Group SpA do not contain any substance included in the Annex XIV, in the Annex XVII (*) and in the Candidate list, (latest publication by ECHA on 17.01.2023: <http://echa.europa.eu/web/guest/candidate-list-table>), beyond the 0,1% limit, apart from articles containing components with applied Rohs exceptions: products containing such components have been registered under SCIP as per summary on page 3. List of part numbers involved are available for customers who have ordered those articles.
(*) N.B.: for Reach legislation about Restrictions in annex XVII we inform you that Everel products i) are not designed for application intended to come in contact with foodstuffs or ii) in prolonged contact with skin, iii) for toys/childcare and iv) medical devices.
Therefore, any REACH Restrictions on categories are not applicable to our product.
Customer demands in these fields have to be highlighted at the beginning of the project phase.
- 3. Dimethylfumarate (DMF):** Ref. "EU Official Journal" dated 20 March 2009, 2001/95/EC, 2009/251/EC to ensure that products containing Dimethylfumarate (DMF) are not placed or made available on the market (used in little pouches with drying agent as Silica Gel).
- 4. Packaging and Packaging waste:** Dir. 94/62/EC, 97/129/EC (incl. MOHS e MOAH hydrocarburic compounds), 2018/852/EC on packaging and packaging waste.
- 5. Active substances under EU Biocidal Product Regulation** No 528/2012
- 6. EU Reg. 2019/1021** (organic persistent pollutants (POPs) & sub.mod.; Global Stockholm Convention; PFAs Reg. 2020/784.
- 7. US Californian Proposition 65** (Legal Ref. Safe Drinking Water and Toxic Enforcement act of 1986). Everel products are incorporated in appliances or forsee very short skin contact. Everel does not carry out specific tests for Prop. 65 on its finished products. It is not possible to exclude that some of these substances might be present as impurities not intentionally added. Conformities to this directive can be evaluated according to part numbers and application.
- 8. Nanomaterials** (EU Dir. (2011/696/EU);
- 9. Mineral Conflict** (Dodd Frank Wall Street Reform&cons.prot.act): conformity supplied on a request based on a list of Everel PNs.
- 10. Rare/Precious Metals** (AGEC law, decree 2022-748): conformity supplied on a request based on a list of Everel PNs.

Everel statements are made on the base of detailed information provided by our qualified suppliers, who knows the exact composition of the material and who are constantly monitored on the environmental aspects compulsory for our product in Europe, including compliance the European REACH Regulation and RoHS Directives among others. Everel plans random test to check compliance of critical components in its products and to support this statement. Our entire Group Management System is certified according to ISO 9001:2015, ISO 14001:2015 and IATF 16949:2016. Moreover, the Group has adopted a Code of Ethics and an Organizational, Management and Control Model for crime prevention in conformity with our national law (Dlgs 231/2001). You can find our current Quality Certificates as well as Code of Ethics and Environment Standard Declaration available on our website - www.everelgroup.com. Conformity was prepared according to our present standard of knowledge and may be amended if new cognitions are available.

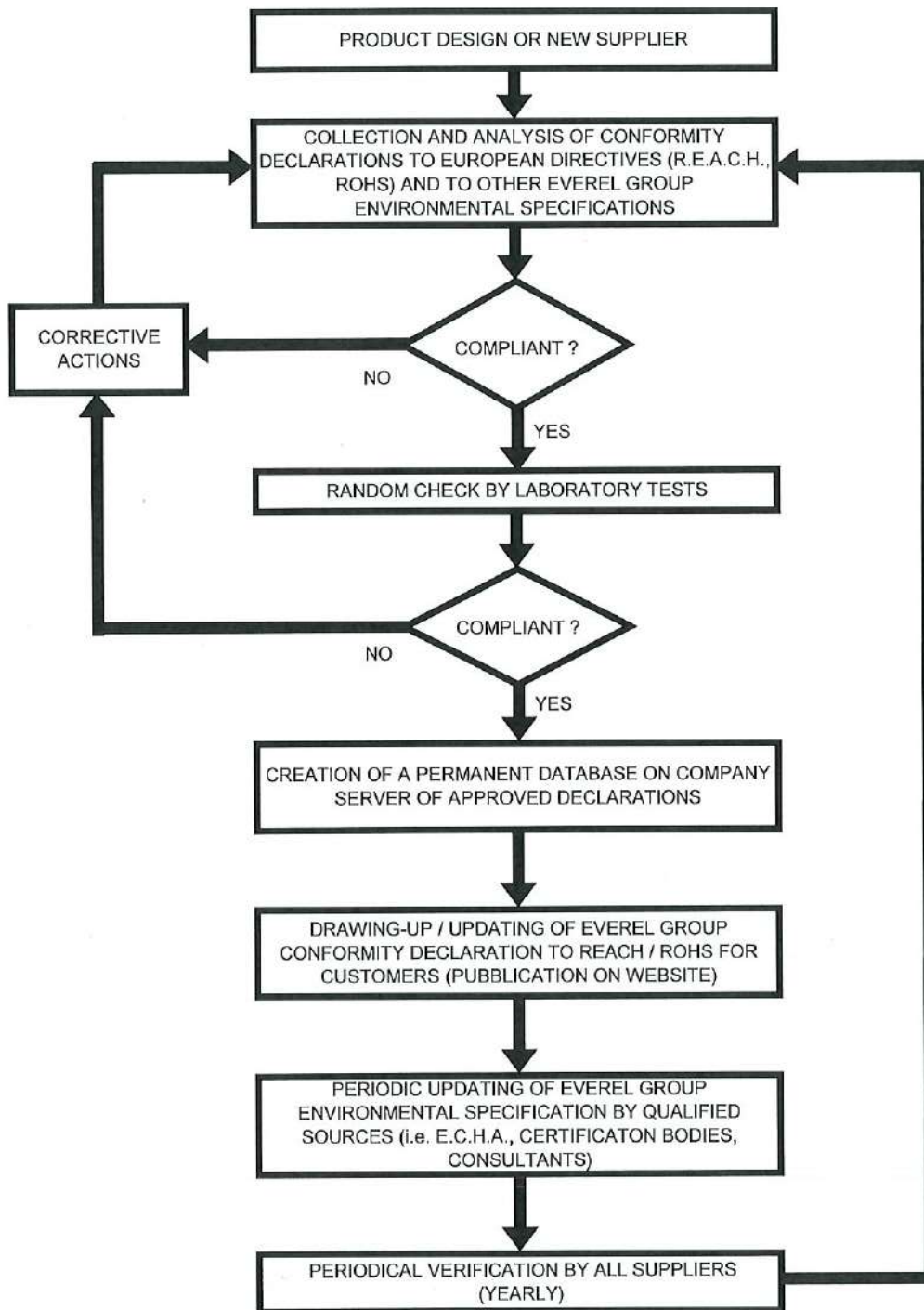
Best Regards,


A. Caserta / CEO

Page 1 of 2



EVEREL GROUP ENVIRONMENTAL SURVEY PROCESS
(According to Art. 7, Section B of the RoHS Directive 2011/65/UE)



List of SCIP Notifications – updating 01.03.2023

Descrizione prodotto	SCIP	RoHS Exempt	Localization	CATEGORY	SVHC	CAS N
APPLIANCE INLETS STF-ST5-SST-SV (C14)	33d698f2-9e0f-49ab-ad6f-a6f09cadf124	6c	metal allow C/61HN (Cu57f59)	8509900000 - Parts	LEAD	7439-92-1
APPLIANCE INLETS STF-ST5-SST-SV (C16)	c754579b-89d3-4a58-84cf-f37f3b6c564a	6c	metal allow C/61HN (Cu57f59)	8509900000 - Parts	LEAD	7439-92-1
APPLIANCE INLETS STF-ST5-SST-SV (C18)	cb30508-35fe-48c6-96e8-edc8deb13a0e	6c	metal allow C/61HN (Cu57f59)	8509900000 - Parts	LEAD	7439-92-1
ASSEMBLATO POP (POP _{max} / PIP0)	dbad1213-6738-4b22-a972-85c30fd2167	6a	Turned PIN	8509900000 - Parts	LEAD	7439-92-1
BLDC (GM3 _{max})	Please refer to the SCIP registrations done per part number on detailed list "SCIP ELETTRONICA".					
ELECTRO MECHANICAL SWITCH (EMS _{max})	be448c3a-1c60-46e0-90f8-2d75b604122d	6a	metal shaft	7326903840 - Iron and steel weights - whether or not with parts of other material -whether or not with parts of other metals -whether or not surface treated -whether or not printed of a kind used for the production of remote.	LEAD	7439-92-1
Gruppo Comandi Low-White (TMHC00 _{max})	c880853a-0a63-43b7-a765-368e87f662e3	7 (c)-I	PCB	8536508000 (Switches -> other types) 8536508000 - Other (SECTION XI (84-85) Machinery and mechanical appliances; electrical equipment; parts thereof; sound recorders and reproducers; television image and sound recorders and reproducers, and	LEAD	7439-92-1
HE SELECTORS K3.BD.WAHLCHARLER	d7fe23d5-b99a-4e8a-ad54-9eecd18ae68b	6a	metal shaft	8536508000 (Switches -> other types)	LEAD	7439-92-1
INC PUSH SWITCH (STM&T&D/W _{max})	a803d22e-8838-43ff-908a-4b35f7dd15b5	7 (a) - 7 (c)-I	PCB	8542311100 (Multi-component integrated circuits)	LEAD	7439-92-1
IR UI for Hoods (SHRCMP _{max})	a803d22e-8838-43ff-908a-4b35f7dd15b5	7 (a) - 7 (c)-I	PCB	8542311100 (Multi-component integrated circuits)	LEAD MONOXIDE	7439-92-1 1317-36-8
MAIN BOARD FOR HOODS (SHRH0 _{max})	55ef3540-68dd-40c2-b777-19ae9ae3a520	7 (a) - 7 (c)-I	PCB	8542311100 (Multi-component integrated circuits)	LEAD	7439-92-1



Descrizione prodotto	SCIP	RoHS Exempti	Localization	CATEGORY	SVHC	CASN
OVEN 10 Family II (ET0xxxxx)	f64528c6-5b84-444b-873f-4b76527e9a9c	7 (a) - 7 (c)H	PCB	9107000000 (Time Switches)	LEAD, TITANIUM, ZIRCONIUM OXIDE (Pb)(Ti)(Zr)O3	12626-81-2 7439-92-1 1317-36-8
OVEN 10 Family III (ET0030xxxx)	b1819095-17d9-4176-b029-35863345ce963	7 (a) - 7 (c)H	PCB	9107000000 (Time Switches)	LEAD, TITANIUM, ZIRCONIUM OXIDE (Pb)(Ti)(Zr)O3	12626-81-2 7439-92-1 1317-36-8
OVEN 10 Family III (ET0030xxxx)	412b329a-a8c6-4ea7-3005-254b344bd397	7 (a) - 7 (c)H	PCB	9107000000 (Time Switches)	LEAD, TITANIUM, ZIRCONIUM OXIDE (Pb)(Ti)(Zr)O3	12626-81-2 7439-92-1 1317-36-8
OVEN 32 (in ET21xxxxxx)	ee730fc-e4fa-4516-38e4-778f518a3c60	7 (a) - 7 (c)H	PCB	9107000000 (Time Switches)	LEAD, TITANIUM, ZIRCONIUM OXIDE (Pb)(Ti)(Zr)O3	12626-81-2 7439-92-1 1317-36-8
PCBA MAIN (SHRCHVXGXXXXXX)	a374c8f-e114-4ec0-923f-d69d1c101771	7 (c)H	PCB	8542311100 (Multi-component integrated circuits)	LEAD MONOXIDE	1317-36-8
PCBA Power gas - plating housing (SHRCHFxxxxxx)	152847be-5ac3-4399-8286-a8888cbdedab	7 (a) - 7 (c)H	PCB	8542311100 (Multi-component integrated circuits)	LEAD MONOXIDE	1317-36-8 7439-92-1
SIMMER CONTROLLER (SHRSCxxxx)	250fd5ee-a4c2-460f-ac46-a68c0ec580c0	7 (a) - 7 (c)H	PCB	8542311100 (Multi-component integrated circuits)	LEAD MONOXIDE	1317-36-8 7439-92-1
SWITCHES (#HT)	61fb4246-3c8b-4b4a-8c63-c9e5fab05139	6a	metal shaft	7326303840 - Iron and steel weights - whether or not with parts of other material - whether or not with parts of other metals - whether or not surface treated - whether or not printed of a kind used for the production of remote controls	LEAD	7439-92-1
SWITCHES 3-19HE SERIES (SHHExxxxx)	7745aa73-508a-4698-b2e6-3bbe008b8159	6a	metal shaft	8536508000 - Other (SECTION XVII (84-85) Machinery and mechanical appliances; electrical equipment; parts thereof; sound recorders and reproducers; television image and sound recorders and reproducers, and sound recording and reproducing apparatus) - Other (SECTION XVII (84-85) Machinery and mechanical appliances; electrical equipment; parts thereof; sound recorders and reproducers; television image and sound recording and reproducing apparatus)	LEAD	7439-92-1
SWITCHES CH SERIES (SHCHxxxxx)	981fc1fa-7ca4-4be8-81a4-f12f78a3b122	6a	metal shaft	8536508000 - Other (SECTION XVII (84-85) Machinery and mechanical appliances; electrical equipment; parts thereof; sound recorders and reproducers; television image and sound recording and reproducing apparatus)	LEAD	7439-92-1
Wiring Harness (ATMBP/ATMSP)	717cd8cc-0b47-42d7-8b3c-62e03e57283b	7 (a) - 7 (c)H	PCB	8538229000 (Other filament lamps, excluding ultraviolet or infrared)	LEAD MONOXIDE	1317-36-8 7439-92-1