

# DY1



<b>TYPICAL APPLICATIONS</b>	Cooking, washing, coffee machines
<b>FUNCTIONS</b>	<ul style="list-style-type: none"> <li>■ SPST, momentary or not</li> <li>■ SPDT, momentary or not</li> </ul>
<b>CYCLE No.</b>	50.000
<b>CUT OUT</b>	Rear panel
<b>AMBIENT TEMPERATURE</b>	125 °C
<b>GWT</b>	850 °C
<b>GWT NO FLAME (&lt;2 sec)</b>	750 °C

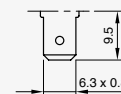
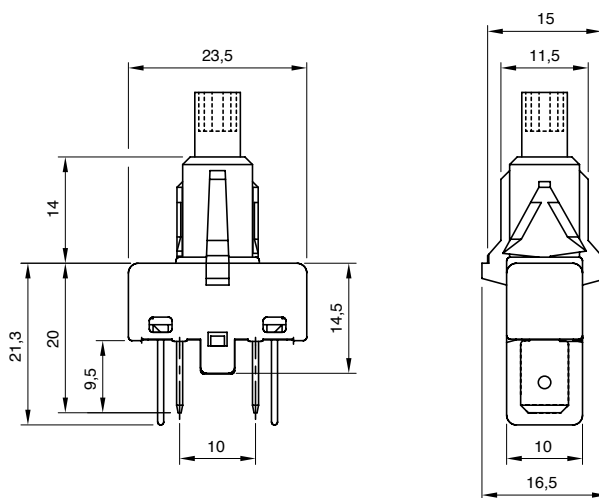
## D Y 1

DRAWING

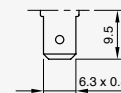
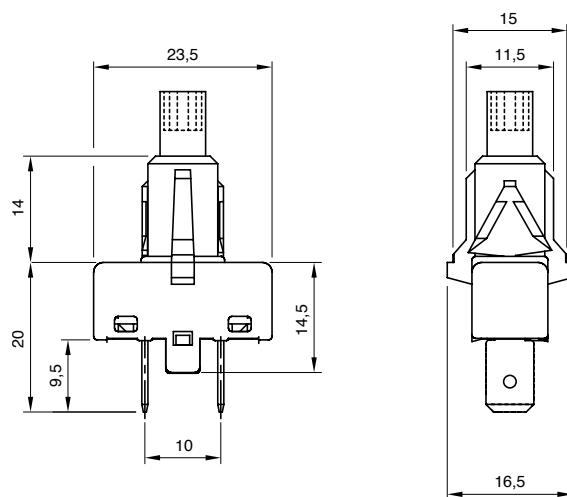


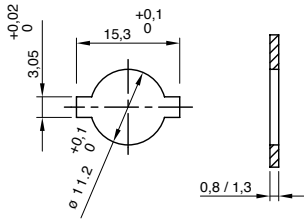
TERMINAL

1



6





**SHAFT**



**LATCHING FUNCTION**



**FUNCTION**



**RATING**

**E**

**S** Push to On - Push to Off

**M** Momentary

**10**

**E**

**Function 10**

16 (6) A / 250 VAC  
 10 (4) A / 250 VAC - 5E4  
 T125/55 °C  
 6 (2) A / 250 VAC  
 T150/55 °C  
 EN 61058-1

16 (6) A / 250 VAC  
 14 A GP / 250 VAC  
 3/4 HP - 250 VAC  
 1/3 HP - 125 VAC  
 T120/55 °C  
 UL 61058-1

**G**

**60**

**Function 60**

16 (6) A / 250 VAC  
 10 (4) A / 250 VAC - 5E4  
 T125/55 °C  
 EN 61058-1

16 (6) A / 250 VAC  
 14 A GP / 250 VAC  
 3/4 HP - 250 VAC  
 1/3 HP - 125 VAC  
 T120/55 °C  
 UL 61058-1

**K**

**30**

**N**

**Function 30**

12 (4) A / 250 VAC  
 10 (4) A / 250 VAC - 5E4  
 T125/55 °C  
 µ disconnection  
 EN 61058-1

13 A GP / 250 VAC  
 3/4 HP - 250 VAC  
 1/3 HP - 125 VAC  
 T120/55 °C  
 µ disconnection  
 UL 61058-1