

# INDICATOR LIGHTS



<b>FUNCTIONS</b>	<ul style="list-style-type: none"> <li>■ Neon or fluorescent lamp, with or without anti-luminescence resistor</li> <li>■ Incandescent lamp</li> <li>■ LED in AC or DC version</li> </ul>
<b>VOLTAGE</b>	From 2 VAC to 400 VAC
<b>MAX TEMPERATURE</b>	From 75 °C to 150 °C
<b>GWT</b>	850 °C
<b>GWT NO FLAME (&lt;2sec)</b>	650 °C



SERIES

CUT OUT

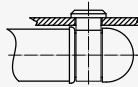
21



Custom



5.4 x 9 mm  
th 1.5 mm

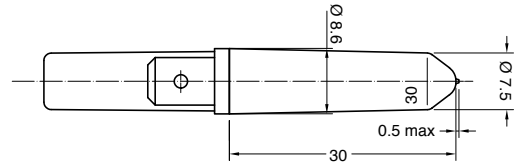


2.5 x 11.6 mm



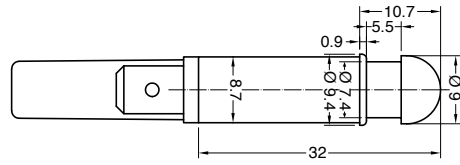
DRAWING

3

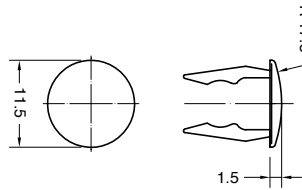


Accessory lenses available separately

4

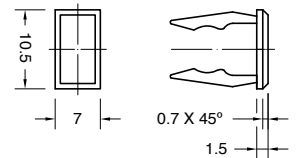


P Drawing 4 + round lens



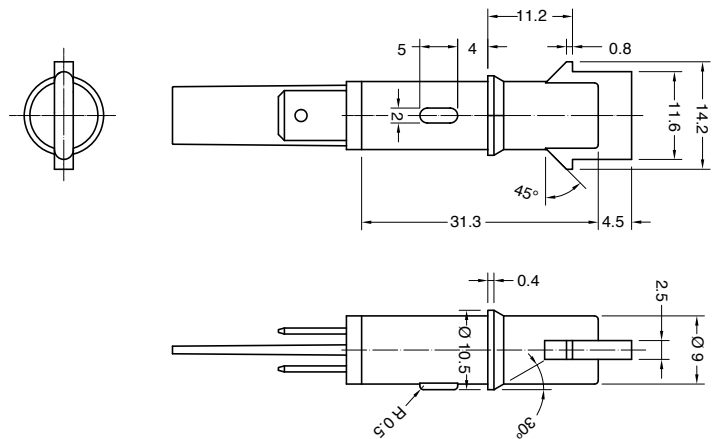
Lens available also separately SX2IT542...

Q Drawing 4 + square lens

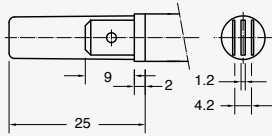
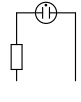





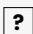
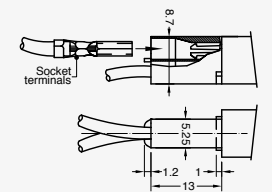
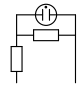
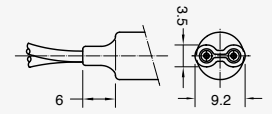
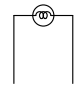
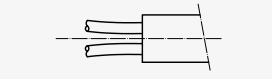
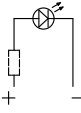
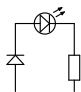
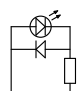


Lens available also separately SX2IT544...

8



S	X										0	0
SERIES	DRAWING	TERMINAL	FUNCTION	VOLTAGE	TEMP.	COLOUR	WIRES					

TERMINAL	FUNCTION	VOLTAGE	TEMPERATURE	COLOUR	WIRES
<p><b>1</b> Series 21 Tabs 6.3 x 0.8</p> 	<p><b>1</b> Series 21</p>  <p>Neon or Fluorescent lamp</p>	<p><b>1</b> Function 5 2 V</p>	<p><b>A</b> T 75 °C</p>	<p><b>SERIES 21</b></p> <p><b>ILLUMINATED</b> ✨</p> <p>Drawing 3 - 4</p> <p><b>L</b>  white</p> <p>Drawing P - Q - 8</p> <p><b>G</b>  red</p> <p><b>H</b>  orange</p> <p><b>E</b>  green</p> <p><b>L</b>  white</p> <p><b>X</b>  custom</p>	<p><b>000</b> Terminal 1 - 7 - C Indicator light without wires</p>
<p><b>C</b> Series 21 Signal Click</p> 	<p><b>2</b> Series 21</p>  <p>Neon or Fluorescent lamp with anti-luminescence</p>	<p><b>2</b> Function 3 - 5 12 V</p>	<p><b>1</b> Function 1 - 2 - 3 T 90 °C</p>		<p><b>000</b> Terminal A - K - R Indicator light with wires</p>
<p><b>K</b> Series 21 Wires crimped</p> 	<p><b>3</b> Series 21</p>  <p>Incandescent lamp</p>	<p><b>3</b> Function 3 - 5 24 V</p>	<p><b>2</b> Function 1 - 2 T 120 °C</p>		<p><b>Wires Materials:</b></p> <ul style="list-style-type: none"> <li>■ PVC (up to T90 °C)</li> <li>■ SILICONE (up to T200 °C)</li> </ul> <p><b>Wires Lengths:</b> from 60 mm to 600 mm (special version available up to 1.450 mm)</p> <p><b>Wires Ends:</b></p> <ul style="list-style-type: none"> <li>■ pre-stripped (from 5.5 to 18 mm)</li> <li>■ stripped (from 5.5 to 18 mm)</li> <li>■ not stripped</li> <li>■ crimp terminals</li> </ul>
<p><b>R</b> Series 21 Wires sealed</p> 	<p><b>5</b> Series 21</p>  <p>LED DC or AC current 2 ÷ 24 V</p>	<p><b>4</b> Function 1 - 2 - 6 - 7 110 V</p>	<p><b>3</b> Function 1 - 2 T 150 °C</p>		
	<p><b>6</b> Series 21 Terminal 1</p>  <p>LED AC current 110 ÷ 250 V</p>	<p><b>6</b> Function 1 - 2 - 6 - 7 230 V</p>			
	<p><b>7</b> Series 21 Terminal C - K - R</p>  <p>LED AC current 110 ÷ 250 V</p>	<p><b>7</b> Function 1 - 2 - 6 - 7 250 V</p>			
		<p><b>8</b> Function 1 - 2 400 V</p>			



SERIES

CUT OUT

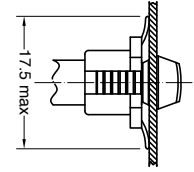
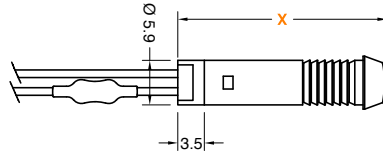


DRAWING

24

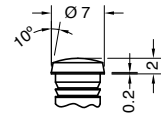
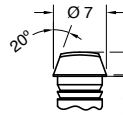


∅ 6 mm  
th 0.5 ... 2 mm



0 X = 24.2 mm

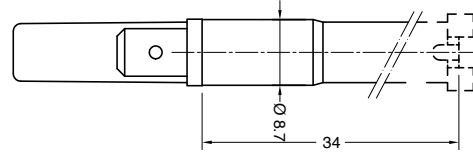
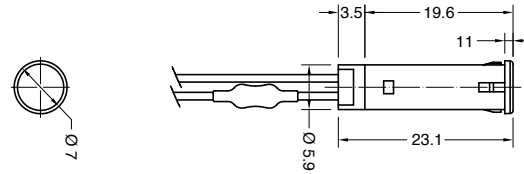
2 X = 23 mm



27



∅ 6 mm  
th 0.5 ... 3 mm

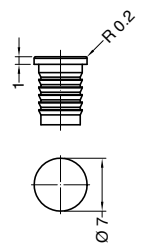
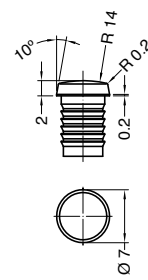
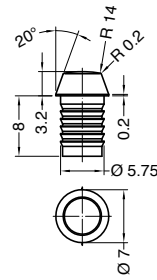
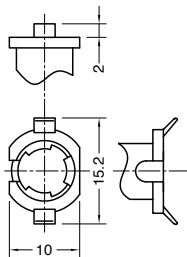


5 No lens 2 clips

0 Drawing 5 + lens

2 Drawing 5 + lens

8 Drawing 5 + lens



Lens available also separately SX27T0...

Lens available also separately SX27T2...

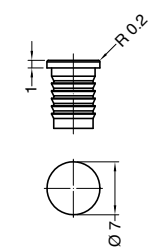
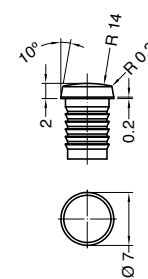
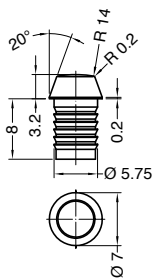
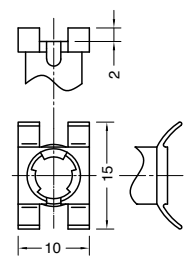
Lens available also separately SX27T8...

N No lens 4 clips

A Drawing N + lens

C Drawing N + lens

E Drawing N + lens



Lens available also separately SX27T0...

Lens available also separately SX27T2...

Lens available also separately SX27T8...

**S****X****0****0**

SERIES

DRAWING

TERMINAL

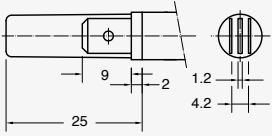
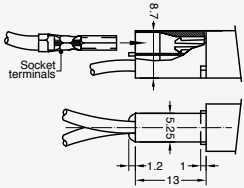
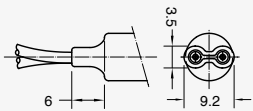
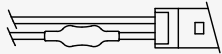
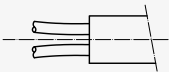
FUNCTION

VOLTAGE

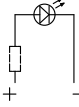
TEMP.

COLOUR

WIRES

**TERMINAL****1** Series 27  
Tabs 6.3 x 0.8**C** Series 27  
Signal Click**K** Series 27  
Wires crimped**P** Series 24  
Wires locked with plug**R** Series 27  
Wires sealed**FUNCTION****1** Series 24 - 27Neon or  
Fluorescent lamp**2** Series 27Neon or  
Fluorescent lamp  
with anti-luminescence**3** Series 27

Incandescent lamp

**5** Series 24 - 27LED  
DC or AC current  
2 ÷ 24 V**6** Series 24 - 27  
Terminal 1 - PLED  
AC current  
110 ÷ 250 V**7** Series 27  
Terminal C - K - RLED  
AC current  
110 ÷ 250 V**VOLTAGE****1** Function 5

2 V

**2** Function 3 - 5

12 V

**3** Function 3 - 5

24 V

**4** Function 1 - 2 - 6 - 7

110 V

**5** Function 1 - 2 - 6 - 7

125 V

**6** Function 1 - 2 - 6 - 7

230 V

**7** Function 1 - 2 - 6 - 7

250 V

**8** Function 1 - 2

400 V

VDE or UL certified

Available  
on demand**X**

Custom

**TEMPERATURE****A**

T 75 °C

**1** Function 1 - 2 - 3

T 90 °C

**2** Function 1 - 2

T 120 °C

**3** Function 1 - 2

T 150 °C

**COLOUR****SERIES 24****ILLUMINATED** ✨

red



orange



green



white

**SERIES 27**

Drawing 5 - N

**NO LENS** ✨

red light



green light

Drawing  
0 - 2 - 8 - A - C - E**ILLUMINATED** ✨

red



orange



green



white



custom

**WIRES****000** Terminal 1 - C

Indicator light without wires

Terminal K - P - R

Indicator light with wires

**Wires Materials:**

- PVC (up to T90 °C)
- SILICONE (up to T200 °C)

**Wires Lengths:**from 60 mm to 600 mm  
(special version available up to 1.450 mm)**Wires Ends:**

- pre-stripped (from 5.5 to 18 mm)
- stripped (from 5.5 to 18 mm)
- not stripped
- crimp terminals



SERIES

CUT OUT

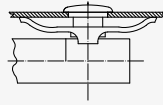


DRAWING

27

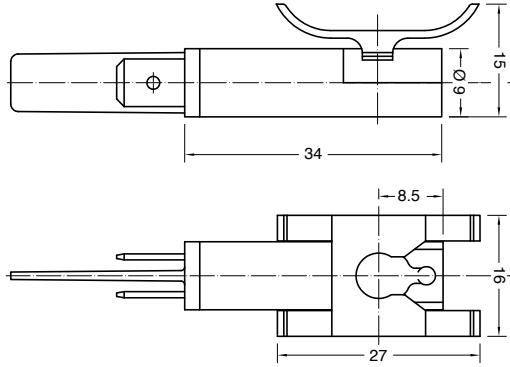


∅ 8 mm  
th 0.5 ... 2 mm



M No lens

P Drawing M + lens



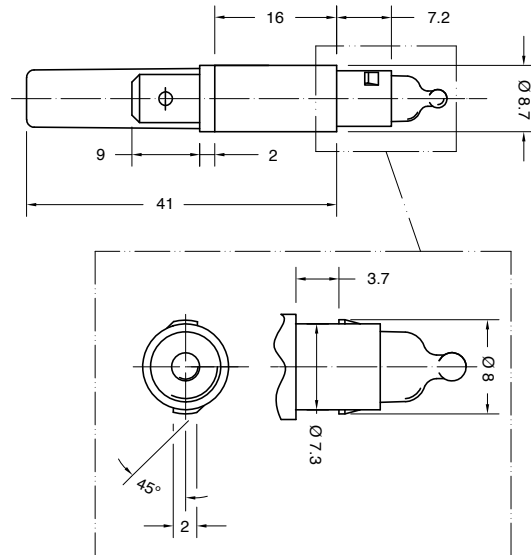
Lens available also separately SX27TP...

28



Custom

5 No lens

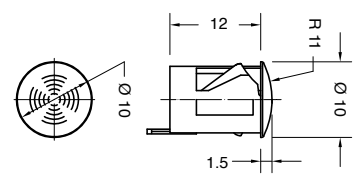
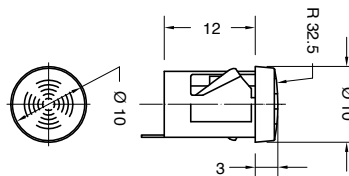


6 Drawing 9 + lens

F Drawing 9 + lens



∅ 9 mm  
th 0.8 ... 2 mm



Lens available also separately SX28T6...

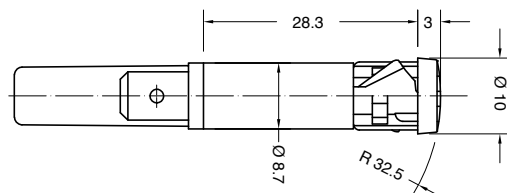
Lens available also separately SX28TF...

Further lens shapes available on demand

H One piece



∅ 9 mm  
th 0.8 ... 2 mm



**1** Series 27 - 28  
Tabs 6.3 x 0.8

**C** Series 27 - 28  
Signal Click

**K** Series 28  
Wires crimped

**R** Series 27 - 28  
Wires sealed

**1** Series 27 - 28

Neon or Fluorescent lamp

**2** Series 27 - 28

Neon or Fluorescent lamp with anti-luminescence

**3** Series 27 - 28

Incandescent lamp

**5** Series 27 - 28

LED  
DC or AC current  
2 ÷ 24 V

**6** Series 28  
Terminal 1

LED  
AC current  
110 ÷ 250 V

**7** Series 28  
Terminal C - K - R

LED  
AC current  
110 ÷ 250 V

**1** Function 5  
2 V

**2** Function 3 - 5  
12 V

**3** Function 3 - 5  
24 V

**4** Function 1 - 2 - 6 - 7  
110 V

**5** Function 1 - 2 - 6 - 7  
125 V

**6** Function 1 - 2 - 6 - 7  
230 V

**7** Function 1 - 2 - 6 - 7  
250 V

**8** Function 1 - 2  
400 V

VDE or UL certified

Available on demand

**X** Custom

**A**

T 75 °C

**1** Function 1 - 2 - 3  
T 90 °C

**2** Function 1 - 2  
T 120 °C

**3** Function 1 - 2  
T 150 °C

**NO LENS** ☀

**0**  red light

**1**  green light

**ILLUMINATED** ☀

**G**  red

**H**  orange

**E**  green

**L**  white

**X**  custom

**000** Terminal 1 - C  
Indicator light without wires

Terminal K - R  
Indicator light with wires

**Wires Materials:**

- PVC (up to T90 °C)
- SILICONE (up to T200 °C)

**Wires Lengths:**  
from 60 mm to 600 mm (special version available up to 1.450 mm)

**Wires Ends:**

- pre-stripped (from 5.5 to 18 mm)
- stripped (from 5.5 to 18 mm)
- not stripped
- crimp terminals




SERIES

CUT OUT

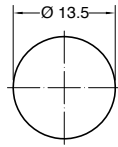
DRAWING

31

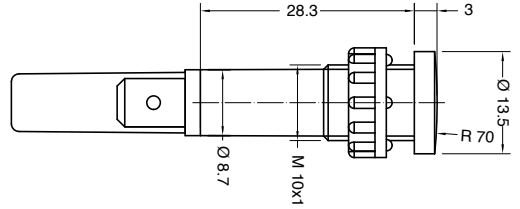


  
 ø 10 mm  
 th 0.5 ... 9 mm

2 Mounted ring




B Unmounted ring

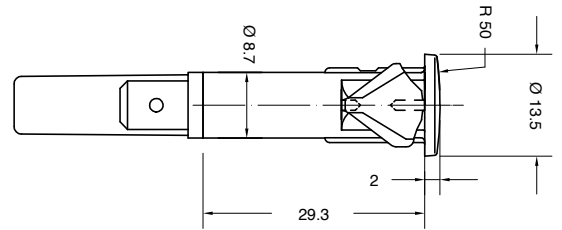


33

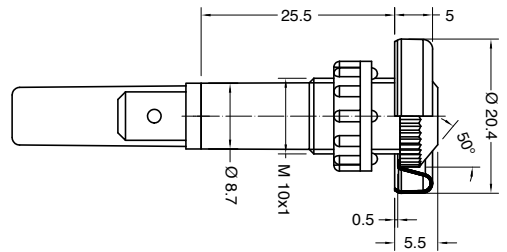
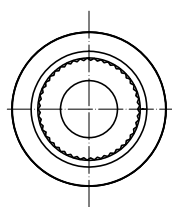


  
 ø 10 mm  
 th 0.8 ... 2 mm

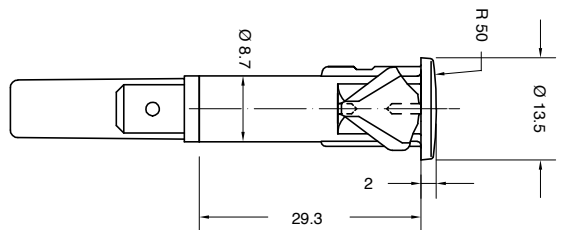
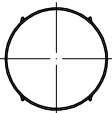
2



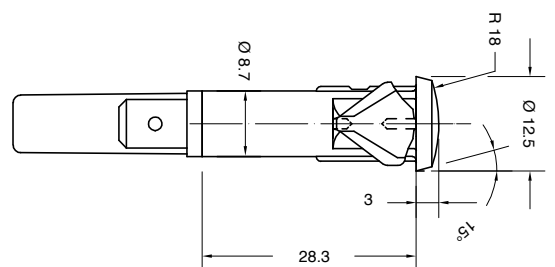
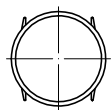
D Unmounted ring



C With antirotation rib



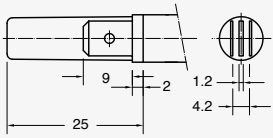
H



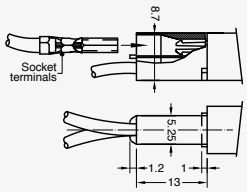


**TERMINAL**

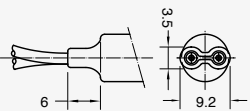
1 Tabs 6.3 x 0.8



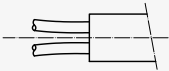
C Signal Click



K Wires crimped

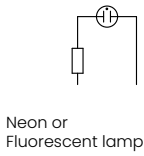


R Wires sealed

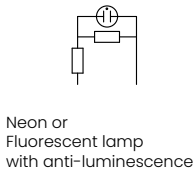


**FUNCTION**

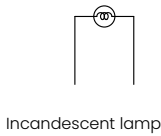
1



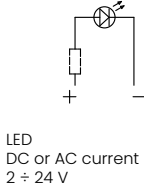
2



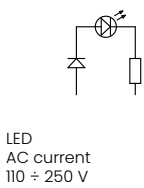
3



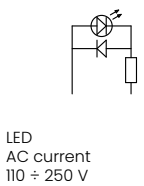
5



6 Terminal I



7 Terminal C - K - R



**VOLTAGE**

1 Function 5  
2 V

2 Function 3 - 5  
12 V

3 Function 3 - 5  
24 V

4 Function 1 - 2 - 6 - 7  
110 V

5 Function 1 - 2 - 6 - 7  
125 V

6 Function 1 - 2 - 6 - 7  
230 V

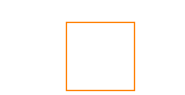
7 Function 1 - 2 - 6 - 7  
250 V

8 Function 1 - 2  
400 V

VDE or UL certified

Available on demand

X Custom



**TEMPERATURE**

A  
T 75 °C

1 Function 1 - 2 - 3  
T 90 °C

2 Function 1 - 2  
T 120 °C

3 Function 1 - 2  
T 150 °C



**COLOUR**

**ILLUMINATED** ✨

G red

H orange

E green

L white

X ? custom



**WIRES**

000 Terminal 1 - C  
Indicator light without wires

Terminal K - R  
Indicator light with wires

**Wires Materials:**  
 ■ PVC (up to T90 °C)  
 ■ SILICONE (up to T200 °C)

**Wires Lengths:**  
 from 60 mm to 600 mm  
 (special version available up to 1.450 mm)

**Wires Ends:**  
 ■ pre-stripped (from 5.5 to 18 mm)  
 ■ stripped (from 5.5 to 18 mm)  
 ■ not stripped  
 ■ crimp terminals





SERIES


CUT OUT



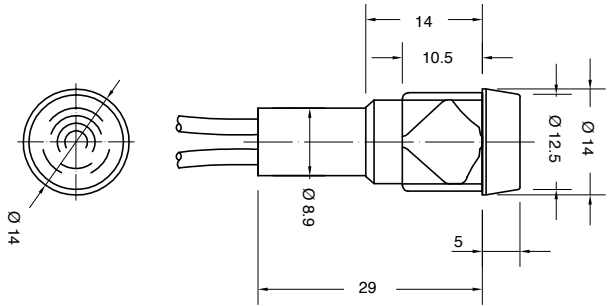
DRAWING


41



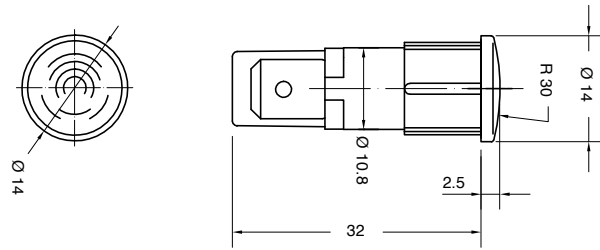

  
 $\varnothing 12 \text{ mm}$ 
  
 $\text{th } 0.8 \dots 2 \text{ mm}$

1





  
 $\varnothing 12 \text{ mm}$ 
  
 $\text{th } 0.8 \dots 2 \text{ mm}$

2

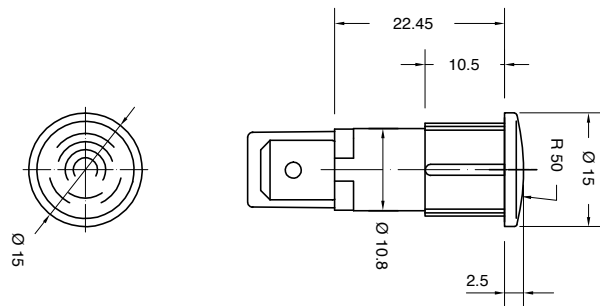


43





  
 $\varnothing 13 \text{ mm}$ 
  
 $\text{th } 0.8 \dots 2 \text{ mm}$

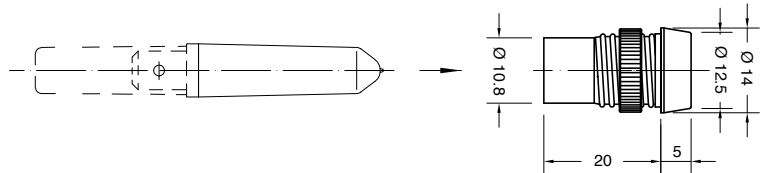
2




ACCESSORY LENSES FOR SERIES SX213...

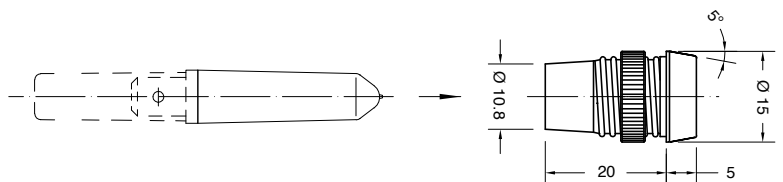
SX21T511...

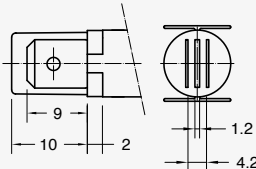
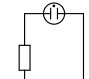
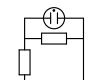
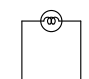
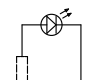







  
 $\varnothing 12 \text{ mm}$ 
  
 $\text{th } 0.8 \dots 6.5 \text{ mm}$



SX21T531...


  
 $\varnothing 13 \text{ mm}$ 
  
 $\text{th } 0.8 \dots 6.5 \text{ mm}$




TERMINAL	FUNCTION	VOLTAGE	TEMPERATURE	COLOUR	WIRES
<p><b>1</b> Series 41 - 43 Tabs 6.3 x 0.8</p> 	<p><b>1</b> </p> <p><b>2</b> </p> <p><b>3</b> </p> <p><b>5</b> </p> <p><b>6</b> Terminal I </p> <p><b>7</b> Terminal R </p>	<p><b>1</b> Function 5 2 V</p> <p><b>2</b> Function 3 - 5 12 V</p> <p><b>3</b> Function 3 - 5 24 V</p> <p><b>4</b> Function 1 - 2 - 6 - 7 110 V</p> <p><b>5</b> Function 1 - 2 - 6 - 7 125 V</p> <p><b>6</b> Function 1 - 2 - 6 - 7 230 V</p> <p><b>7</b> Function 1 - 2 - 6 - 7 250 V</p> <p><b>8</b> Function 1 - 2 400 V</p> <p>VDE or UL certified</p> <p><input type="checkbox"/> Available on demand</p> <p><b>X</b> Custom</p>	<p><b>A</b></p> <p>T 75 °C</p> <p><b>1</b> Function 1 - 2 - 3 T 90 °C</p> <p><b>2</b> Function 1 - 2 T 120 °C</p> <p><b>3</b> Function 1 - 2 T 150 °C</p>	<p><b>ILLUMINATED</b> </p> <p><b>G</b>  red</p> <p><b>H</b>  orange</p> <p><b>E</b>  green</p> <p><b>L</b> <input type="checkbox"/> white</p> <p><b>X</b> <input type="checkbox"/> ? custom</p>	<p><b>000</b> Terminal I - C Indicator light without wires</p> <p><input type="checkbox"/> <input type="checkbox"/> <input type="checkbox"/> Terminal K - R Indicator light with wires</p> <p><b>Wires Materials:</b></p> <ul style="list-style-type: none"> <li>■ PVC (up to T90 °C)</li> <li>■ SILICONE (up to T200 °C)</li> </ul> <p><b>Wires Lengths:</b> from 60 mm to 600 mm (special version available up to 1.450 mm)</p> <p><b>Wires Ends:</b></p> <ul style="list-style-type: none"> <li>■ pre-stripped (from 5.5 to 18 mm)</li> <li>■ stripped (from 5.5 to 18 mm)</li> <li>■ not stripped</li> <li>■ crimp terminals</li> </ul>

**SX21T572...**  
with antirotation rib

**SX21T578...**  
without antirotation rib

  
ø 10.2 mm  
th 0.8 ... 2 mm

**SX21T592...**

  
ø 13 mm  
th 0.5 ... 2.5 mm

