

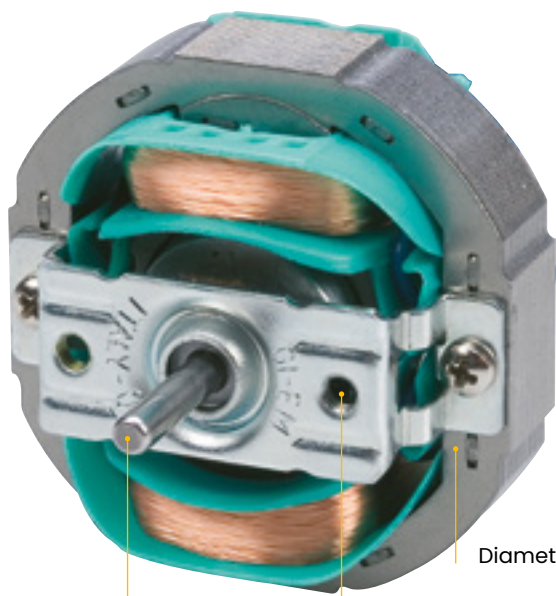


# SHADED POLE MOTOR Ø 58



## FEATURES

- Motor life: from 3.000 hours (sinterized sleeve bearings) to 30.000 hours (ball bearings)
- Motor compliant for attended and unattended appliances
- 2-speed version available
- Class of insulation according to IEC 60085: F or H
- Power supply: from 12 VAC to 240 VAC / 1 / 50-60 Hz
- Operating temperature from 0°C to 40°C different temperature on demand



Diameter: 58 mm

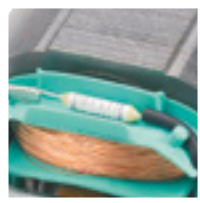
Shaft diameter 4 mm;  
clock-wise and counter clock-wise

Fixing holes threaded M4

## OPTIONS



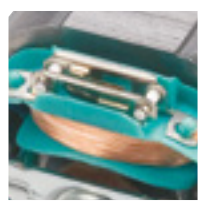
Shaft can be smooth, milled or with grooves with length on demand



Fuse



Plastic flange with ball bearing  
Steel flange with bushes bearings



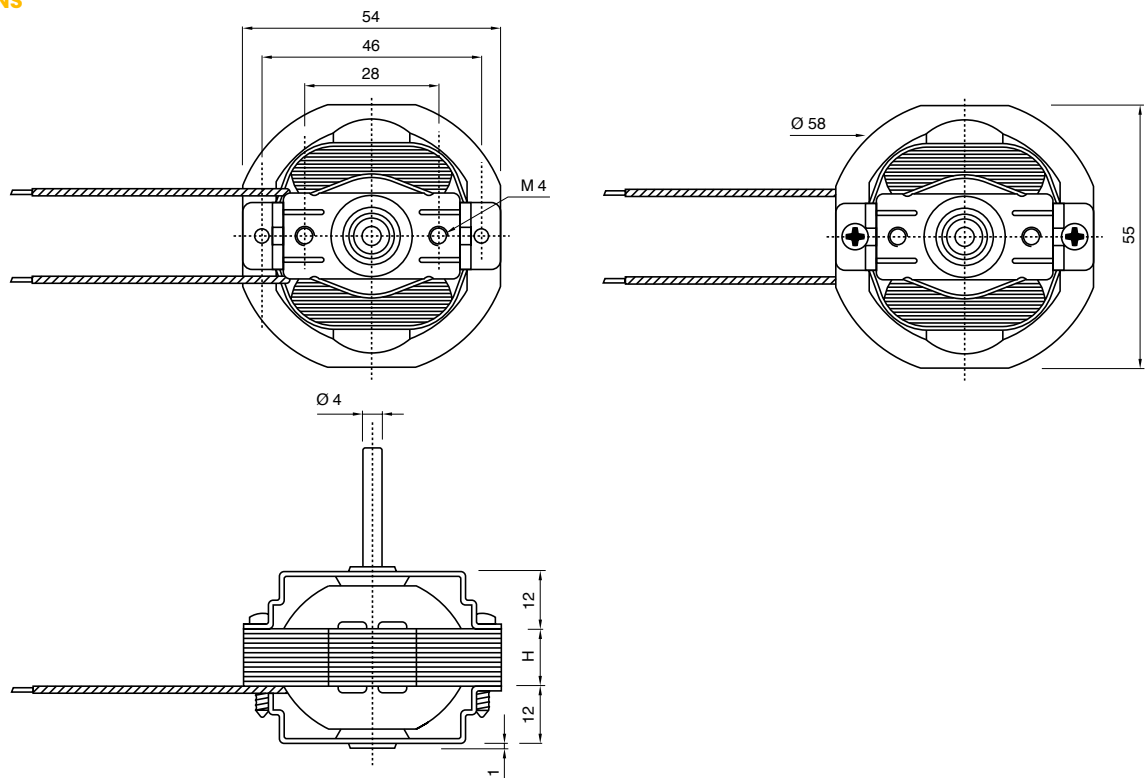
Thermostat



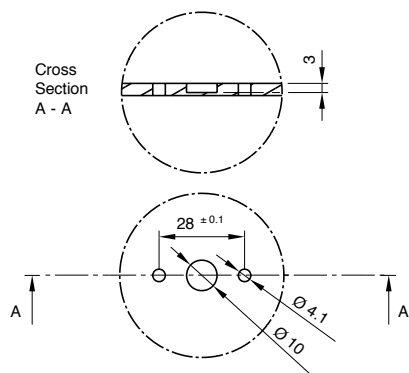
Stack height from 12 to 35 mm

Motors protected by motor impedance or thermal protected by fuse or thermostat (autoreset or self holding)

DIMENSIONS



CUT OUT



TECHNICAL FEATURES

Stack height (H) mm	Power absorption W		
	Low consumption version	Normal version	Powered version
12	8	15	25
16	10	20	30
20	15	25	30
25	15	25	35
30	20	30	40
30	20	35	50