

SXL5

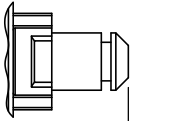


TYPICAL APPLICATIONS	Vacuum cleaners, washing machines, dishwashers, hydrocleaners
FUNCTIONS	<ul style="list-style-type: none"> ■ SPST, momentary or not ■ DPST, momentary or not
CYCLE No.	50.000
CUT OUT	Rear panel
AMBIENT TEMPERATURE	125 °C
GWT	850 °C
GWT NO FLAME (<2 sec)	750 °C

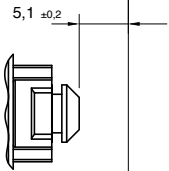


DRAWING

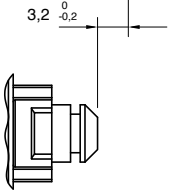
OFF position



Max level

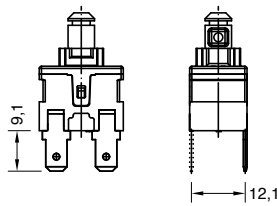


ON position

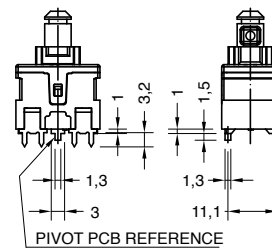


1

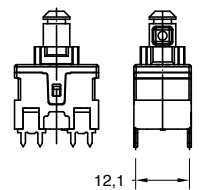
Vertical tab terminals



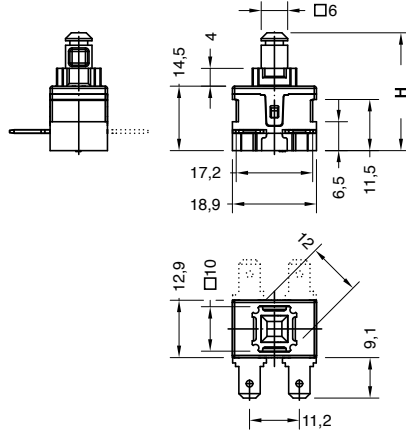
Vertical PCB terminals
Single pole version



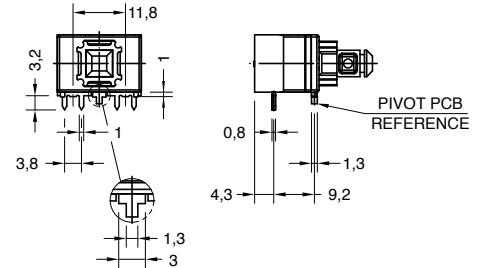
Double pole version



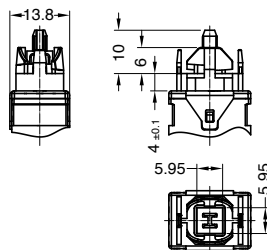
Horizontal tab terminals



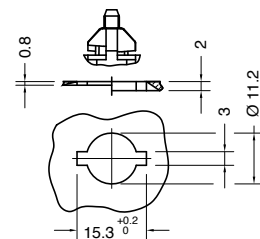
Horizontal PCB terminals



2

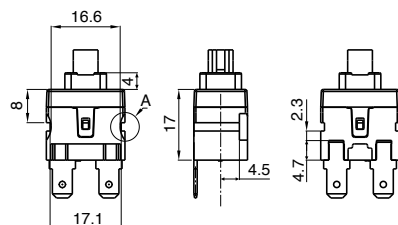


Wings fixing

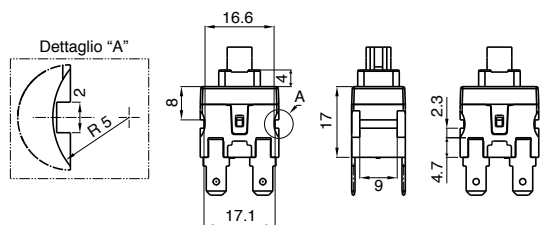


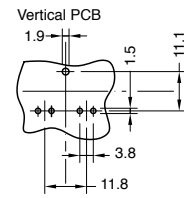
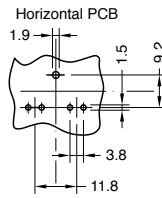
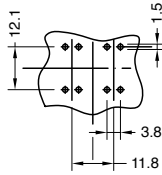
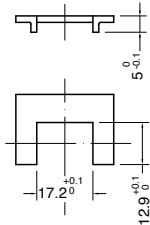
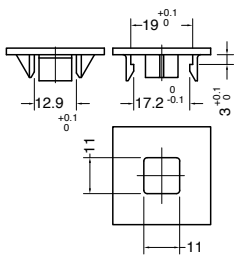
3

Single pole version



Double pole version





S **X** **L** **5** **0** **0** **0** **W**

DRAWING TERMINAL SHAFT FUNCTION RATING

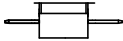


TERMINAL

1 Drawing 1 - 2 - 3
Vertical terminal
6.3x0.8



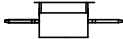
A Drawing 1 - 3
Horizontal terminal
6.3x0.8



2 Drawing 1 - 2 - 3
Vertical terminal
4.8x0.8



B Drawing 1 - 3
Horizontal terminal
4.8x0.8



4 Drawing 1 - 2
Vertical PCB terminal

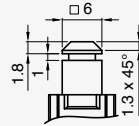


D Drawing 1
Horizontal PCB terminal
only function 1 - 4

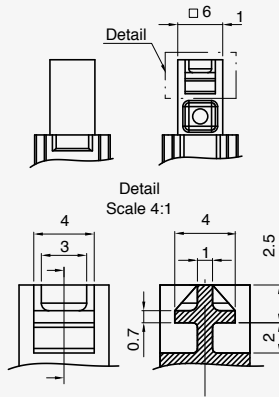


SHAFT

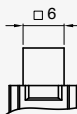
A H = 26.5
Available with drawing 1



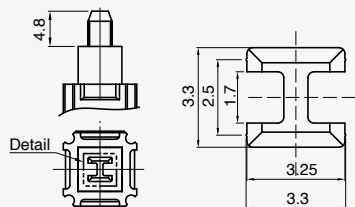
B H = 28.5



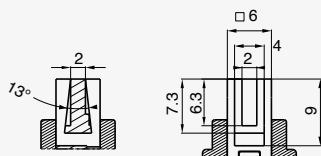
C H = 24
Available with drawing 1



D H = 28.5



E H = 26.5
Available with drawing 3

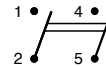


FUNCTION

1



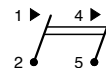
2



4



7



RATING

H

12 (8) A / 250 VAC
16 (4) A / 250 VAC
10 (6) A / 250 VAC - 5E4
T125/55 °C
EN 61058-1

16 (4) A 125 / 250 VAC
12 (10) A 125 / 250 VAC
1/2 HP - 125 VAC
3/4 HP - 250 VAC
T125/55 °C
UL 61058-1

9

12 (8) A / 250 VAC - 5E4
T85/55 °C
EN 61058-1

16 (4) A 125 / 250 VAC
12 (10) A 125 / 250 VAC
1/2 HP - 125 VAC
3/4 HP - 250 VAC
T125/55 °C
UL 61058-1